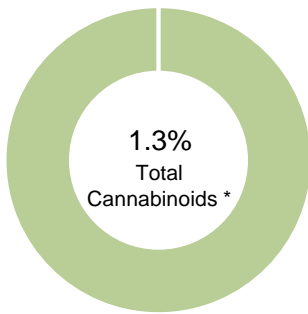


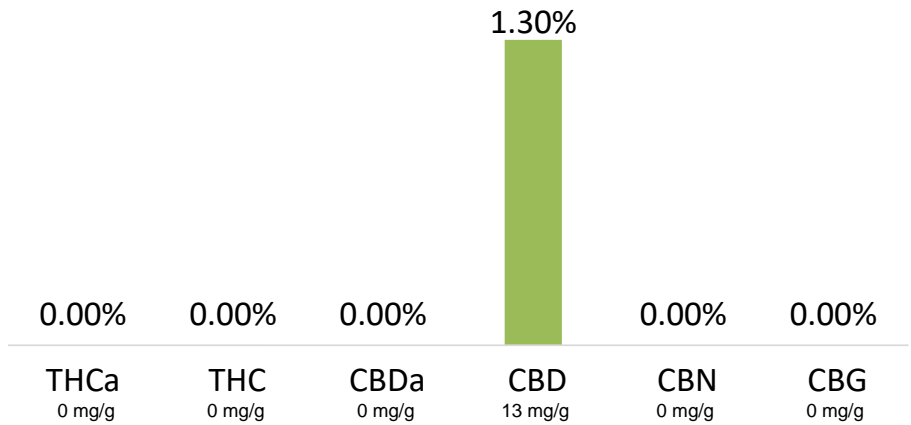
920011

<b>Batch ID:</b>	N/A	<b>Test ID:</b>	9133970.004
<b>Reported:</b>	13-Feb-2019	<b>Method:</b>	TM01
<b>Type:</b>	Concentrate		
<b>Test:</b>	Potency		

CANNABINOID PROFILE



- Total Potential THC 0% \*\*
- Total Potential CBD 1.3% \*\*



\* Total Cannabinoids result reflects the absolute sum of all cannabinoids detected.

\*\* Total Potential THC/CBD is calculated using the following formulas to take into account the loss of a carboxyl group during decarboxylation step.

Total THC = THC + (THCa \*(0.877)) and Total CBD = CBD + (CBDa \*(0.877))

% = % (w/w) = Percent (Weight of Analyte / Weight of Product)

NOTES:

Free from visual mold, mildew, and foreign matter.

FINAL APPROVAL

Sam Smith  
13-Feb-2019  
1:32 PM

David Green  
13-Feb-2019  
1:49 PM

PREPARED BY / DATE

APPROVED BY / DATE

Testing results are based solely upon the sample submitted to Botanacor Services, LLC, in the condition it was received. Botanacor Services, LLC warrants that all analytical work is conducted professionally in accordance with all applicable standard laboratory practices using validated methods. Data was generated using an unbroken chain of comparison to NIST traceable Reference Standards and Certified Reference Materials. This report may not be reproduced, except in full, without the written approval of Botanacor Services, LLC. ISO/IEC 17025:2005 Accredited A2LA Certificate Number 4329.02



Certificate #4329.02

920011

**Batch ID:** N/A

**Reported:** 10-Feb-2019

**Type:** Concentrate

**Test:** Micro

**MICROBIAL CONTAMINANTS**

Test	Result	Unit
<b>Total Aerobic Count</b>	None Detected	CFU/g
<b>Total Coliforms</b>	None Detected	CFU/g
<b>Total Yeast and Molds</b>	None Detected	CFU/g
<b><i>E. coli</i></b>	None Detected	CFU/g
<b><i>Salmonella</i></b>	None Detected	CFU/g

\* CFU/g = Colony Forming Unit per Gram


\*\* Total Yeast and Molds values are recorded in scientific notation, a common microbial practice of expressing numbers that are too large to be conveniently written in decimal form.

Examples:  $10^2 = 100$  CFU  
 $10^3 = 1,000$  CFU  
 $10^4 = 10,000$  CFU  
 $10^5 = 100,000$  CFU


**NOTES:**

Free from visual mold, mildew, and foreign matter.

**FINAL APPROVAL**

  
Vicente Contreras  
10-Feb-2019  
3:13 PM

PREPARED BY / DATE

  
Mike Branvold  
10-Feb-2019  
5:25 PM

APPROVED BY / DATE

Testing results are based solely upon the sample submitted to Botanacor Services, LLC, in the condition it was received. Botanacor Services, LLC warrants that all analytical work is conducted professionally in accordance with all applicable standard laboratory practices using validated methods. Data was generated using an unbroken chain of comparison to NIST traceable Reference Standards and Certified Reference Materials. This report may not be reproduced, except in full, without the written approval of Botanacor Services, LLC.



40 West Louise Ave., Salt Lake City, UT 84115  
 Phone: (801) 485-1800 Fax: (801) 484-9211  
 Email: utlab@advancedlabsinc.com  
**FDA Registration #3006423386**

If you liked our service, please tell a friend. If you didn't, please tell us!

## Test Certificate

Description: 920011  
 Sample ID:  
 Lot No: 920011  
 Part Code:  
 Location:  
 PO No:  
 Received: 2/11/2019

Client: Elixinol  
 Attn: Accounts Payable  
 555 Burbank Street  
 Broomfield, CO 80220

Lab No: 166100-01  
 Completed: 2/18/2019

Analysis	Result	Per Unit	Method
†Residual Solvent Class 1	<0.1	ppm	USP <467> GCMS
†Residual Solvent Class 2	<0.1	ppm	USP <467> GCMS
†Residual Solvent Class 3	<0.1	ppm	USP <467> GCMS
†Residual Organic Volatiles	<0.1	ppm	USP <467> GCMS

Residual Organic Volatiles, Residual Solvent Class 1, Residual Solvent Class 2 and Residual Solvent Class 3 analysis performed by headspace sampling GC-MS on a capillary column stationary phase of BPX5, 0.25m film: length: 30m x 0.1 mm ID. Oven Program: Initial Temp:50°C, 1 min. Rate 1: 30°C/min. Final Temp: 320°C, 2 min. Detector Type: MS in positive ion Temperature: 320°C Carrier Gas: He, 23psi. Average Linear Velocity:30 cm/sec at 50°C. Injection Mode: Split. Split Ratio: 100:1. Injection Volume: 1.0 µL Injection Temperature: 250°C Liner Type: 4 mm ID Single Taper.

**THESE RESULTS APPLY ONLY TO THE SAMPLE SUBMITTED AND NOT TO THE PRODUCT FROM WHICH IT WAS TAKEN. THESE RESULTS ARE PROVIDED ONLY FOR THE BENEFIT OF CLIENT, WITHOUT REPRESENTATION OR WARRANTY OF ANY KIND, EXCEPT FOR THE EXPRESS LIMITED WARRANTY PROVIDED SOLELY TO CLIENT IN ADVANCED LABORATORIES' TERMS OF SERVICE.**

**THIS CERTIFICATE SHALL NOT BE REPRODUCED EXCEPT IN FULL, WITHOUT WRITTEN APPROVAL FROM ADVANCED LABORATORIES.**

Results Approved By:   
 Alisa Farnsworth-Quality Technician

Dated: 2/18/2019

Tests marked with † were done at Atlas Bioscience Labs, LLC, a joint venture with Advanced Laboratories. - 1775 S. Pantano Rd - Ste #110, Tucson, AZ 85710

Printed: 2/18/2019 2:36:54 PM



## Certificate of Analysis

### Elixinol, LLC

555 Burbank Street, Unit J  
 Broomfield, CO 80020

<b>Sample Name:</b>	<b>920011</b>	<b>Eurofins Sample:</b>	<b>8149385</b>
<b>Project ID</b>	ELIXINOL-20190213-0011	<b>Receipt Date</b>	13-Feb-19
<b>PO Number</b>	Not Provided	<b>Receipt Condition</b>	Ambient
<b>Lot Number</b>	920011	<b>Login Date</b>	13-Feb-19
<b>Sample Serving Size</b>	NA		

Analysis	Specification	Result
<b>Metals Testing: ICP-MS for 4 Elements</b>		
Arsenic	NA	< 0.076 ppm
Cadmium	NA	< 0.019 ppm
Lead	NA	< 0.019 ppm
Mercury	NA	< 0.0095 ppm

Method References	Testing Location
-------------------	------------------

<b>Metals Testing: ICP-MS for 4 Elements (CDA-00100497-ARS)</b> 99.1-CDXA-4.0-000615	<b>Food Integrity Innovation- Eurofins Botanical Testing.</b>
---	---

Testing Location(s)	Released on Behalf of Eurofins by
---------------------	-----------------------------------

<b>Food Integrity Innovation-Eurofins Botanical Testing, US, Inc.</b> Eurofins Botanical Testing, US, Inc. 2830 Wilderness Pl Boulder CO 80301 United States	<b>Ian Laessig – Site Manager</b>
---	-----------------------------------



Eurofins Food Integrity and Innovation accepts all liability for work conducted as of 01 Aug 2018. These results apply only to the items tested. This certificate of analysis shall not be reproduced, except in its entirety, without the written approval of Eurofins.

## Certificate of Analysis

### Elixinol, LLC

555 Burbank Street, Unit J  
Broomfield, CO 80020

<b>Sample Name:</b>	<b>920011</b>	<b>Eurofins Sample:</b>	<b>8149385</b>
<b>Project ID</b>	ELIXINOL-20190213-0011	<b>Receipt Date</b>	13-Feb-2019
<b>PO Number</b>	Not Provided	<b>Receipt Condition</b>	Ambient temperature
<b>Lot Number</b>	920011	<b>Login Date</b>	13-Feb-2019
<b>Sample Serving Size</b>	NA		

### Analysis

### Result

#### Multi-Residue Analysis for hemp products - 60+ compounds

Matrix Type - To Determine Limit of Quantification (LOQ)

Spices - Botanicals - and other  
Specialty Samples

Abamectin	<0.05 mg/kg
Aldicarb	<0.05 mg/kg
Aldicarb sulfone (Aldoxycarb)	<0.05 mg/kg
Aldicarb sulfoxide	<0.05 mg/kg
Azoxystrobin	<0.05 mg/kg
Bifenazate	0.13 mg/kg
Bifenthrin	<0.05 mg/kg
Carbaryl	<0.05 mg/kg
Carbofuran	<0.05 mg/kg
Carbofuran-3-hydroxy-	<0.05 mg/kg
Chlorantraniliprole	<0.05 mg/kg
Chlordane, cis-	<0.05 mg/kg
Chlordane, trans-	<0.05 mg/kg
Chlorfenapyr	<0.05 mg/kg
Chlorpyrifos	0.030 mg/kg
Coumaphos	<0.05 mg/kg
Cyfluthrin	<0.05 mg/kg
Cypermethrin	<0.05 mg/kg
Cyproconazole (2 diastereoisomers)	<0.05 mg/kg
Cyprodinil	<0.05 mg/kg
Dichlorvos	<0.05 mg/kg
Diclobutrazol	<0.05 mg/kg
Dipropetryn	<0.05 mg/kg
Disulfoton	<0.05 mg/kg
Endosulfan I (alpha-isomer)	<0.05 mg/kg
Endosulfan II (beta-isomer)	<0.05 mg/kg

## Certificate of Analysis

### Elixinol, LLC

555 Burbank Street, Unit J  
Broomfield, CO 80020

<b>Sample Name:</b>	<b>920011</b>	<b>Eurofins Sample:</b>	<b>8149385</b>
<b>Project ID</b>	ELIXINOL-20190213-0011	<b>Receipt Date</b>	13-Feb-2019
<b>PO Number</b>	Not Provided	<b>Receipt Condition</b>	Ambient temperature
<b>Lot Number</b>	920011	<b>Login Date</b>	13-Feb-2019
<b>Sample Serving Size</b>	NA		

#### Analysis

#### Result

#### Multi-Residue Analysis for hemp products - 60+ compounds

Endosulfan sulfate	<0.05 mg/kg
Epoxiconazole	<0.05 mg/kg
Ethiofencarb	<0.05 mg/kg
Etofenprox	<0.05 mg/kg
Etoxazole	<0.05 mg/kg
Fenoxycarb	<0.05 mg/kg
Fenpropathrin	<0.05 mg/kg
Fenvalerate/Esfenvalerate (sum of isomers)	<0.05 mg/kg
Fipronil	<0.05 mg/kg
Fipronil desulfinyl	<0.05 mg/kg
Fipronil sulfone	<0.05 mg/kg
Imazalil	<0.05 mg/kg
Imidacloprid	<0.05 mg/kg
Malathion	<0.05 mg/kg
Methiocarb	<0.05 mg/kg
Methiocarb sulfone	<0.05 mg/kg
Methiocarb sulfoxide	<0.05 mg/kg
Methomyl	<0.05 mg/kg
Mevinphos (E- and Z-isomers)	<0.05 mg/kg
Myclobutanil	<0.05 mg/kg
Naled (Dibrom)	<0.05 mg/kg
Paclobutrazol	<0.05 mg/kg
Permethrin (sum of isomers)	<0.05 mg/kg
Propoxur	<0.05 mg/kg
Spinetoram (spinosyns J and L)	<0.05 mg/kg
Spinosad (spinosyns A and D)	<0.05 mg/kg
Spirodiclofen	non-analyzable
Spiromesifen	<0.05 mg/kg

## Certificate of Analysis

### Elixinol, LLC

555 Burbank Street, Unit J  
Broomfield, CO 80020

<b>Sample Name:</b>	<b>920011</b>	<b>Eurofins Sample:</b>	<b>8149385</b>
<b>Project ID</b>	ELIXINOL-20190213-0011	<b>Receipt Date</b>	13-Feb-2019
<b>PO Number</b>	Not Provided	<b>Receipt Condition</b>	Ambient temperature
<b>Lot Number</b>	920011	<b>Login Date</b>	13-Feb-2019
<b>Sample Serving Size</b>	NA		

Analysis	Result
<b>Multi-Residue Analysis for hemp products - 60+ compounds</b>	
Spiromesifen enol	<0.05 mg/kg
Spirotetramat	<0.05 mg/kg
Spiroxamine (2 diastereoisomers)	<0.05 mg/kg
Tebuconazole	<0.05 mg/kg
Thiabendazole	<0.05 mg/kg
Thiabendazole-5-hydroxy-	<0.05 mg/kg
Thiacloprid	<0.05 mg/kg
Trifloxystrobin	0.012 mg/kg
Metolachlor	0.032 mg/kg
Pyrethrum (total)	<0.50 mg/kg

Method References	Testing Location
-------------------	------------------

<b>Multi-Residue Analysis for hemp products - 60+ compounds (PEST_HEMP)</b>	<b>Food Integ. Innovation-Greenfield</b>
---	--

*Official Methods of Analysis, AOAC Official Method 2007.01, Pesticide Residues in Foods by Acetonitrile Extraction and Partitioning with Magnesium Sulfate, AOAC INTERNATIONAL (modified).*

*CEN Standard Method EN 15662: Food of plant origin - Determination of pesticide residues using GC-MS and/or LC-MS/MS following acetonitrile extraction/partitioning and clean-up by dispersive SPE - QuEChERS method.*

List of the tested pesticides and their limits of quantification (LOQs) are available upon request.

## Certificate of Analysis

Elixinol, LLC

555 Burbank Street, Unit J  
Broomfield, CO 80020

---

**Testing Location(s)****Released on Behalf of Eurofins by****Food Integ. Innovation-Greenfield****Karelyn Koehn - Manager**

Eurofins Food Chemistry Testing US, Inc.  
671 S. Meridian Road  
Greenfield IN 46140  
800-675-8375



2918.06

Eurofins Food Integrity and Innovation accepts all liability for work conducted as of 01 Aug 2018.

These results apply only to the items tested. This certificate of analysis shall not be reproduced, except in its entirety, without the written approval of Eurofins.

---